



**European
Gymnastics**

Head Office
Avenue de la Gare 12
CH - 1003 Lausanne

Phone: +41 - 21 - 613.10.20

info@europeangymnastics.org
www.europeangymnastics.com

11th European Men's and Women's Artistic Gymnastics Championships

**Leipzig, GER
26 – 31 May 2025**



Directives

FIG Event ID: 17861

EBU

OPERATING EUROVISION AND EURORADIO

SMARTSCORING

Dear President,

European Gymnastics is pleased to herein provide you with the Directives for the 11th European Men's and Women's Artistic Gymnastics Championships, to be held in Leipzig (GER) from 26–31 May 2025.

These European Championships will be organised following the FIG & European Gymnastics Statutes and Technical Regulations (TR), MAG and WAG Code of Points and relevant newsletters and help desk, FIG General Judges Rules, FIG Specific Judges Rules, FIG Anti-Doping Rules, European Gymnastics Medical Guidelines, the Medical Organisation of FIG Competitions and Events, the FIG Framework for Safeguarding Athletes and other Participants from Harassment and abuse in Sport during Events, the FIG License Rules, European Gymnastics Media Rules, FIG Apparatus Norms, FIG Advertising and Publicity Rules, FIG Rules for Sanctioning (approval) of International Events, European Gymnastics Accreditation Directives, FIG Code of Ethics, FIG Code of Conduct, FIG Code of Discipline, Rules for Award Ceremonies as well as all other Rules and Guidelines valid starting 01 January 2025 onwards, any possible amendments by the date of these European Championships, and any complements decided in the meantime.

All participating Federations commit to abide by the FIG and European Gymnastics Statutes and all European Gymnastics & FIG Rules and Regulations. Federations that fail to respect them will not be allowed to participate.

Table of Contents

1.	EUROPEAN GYMNASTICS	3
2.	LOCAL ORGANISING COMMITTEE & HOST FEDERATION	3
3.	LOCATION OF THE COMPETITION, TRAINING & WARM-UP HALLS.....	3
4.	PROVISIONAL SCHEDULE (subject to changes).....	5
5.	PARTICIPATION RIGHT AND ACCREDITATIONS	6
6.	AGE LIMITS OF GYMNASTS.....	8
7.	REGISTRATIONS AND ENTRY FEES	9
8.	LICENCES.....	10
9.	JUDGING	10
10.	DRAWING OF LOTS	10
11.	COMPETITION FORMAT.....	11
12.	EQUIPMENT	12
13.	PUBLICITY.....	12
14.	VISA.....	12
15.	TRANSPORTATION.....	13
16.	ACCOMMODATION	13
17.	MEALS.....	18
18.	INSURANCE	20
19.	SAFEGUARDING	20
20.	WORK PLAN	20
21.	DOPING CONTROLS	20
22.	OFFICIAL HOSPITAL.....	21
23.	WAG MUSIC.....	21
24.	TICKETS	21
25.	SUMMARY OF DEADLINES AND PAYMENTS.....	21

1. EUROPEAN GYMNASTICS

EUROPEAN GYMNASTICS

Contact person: Mrs Linda Davila
Avenue de la Gare 12
CH - 1003 Lausanne
Tel: +41 (0)21 613 10 20
Email: ldavila@europeangymnastics.com
Website: www.europeangymnastics.com
Event site: www.europeangymnastics.com – ART ECh 2025



2. LOCAL ORGANISING COMMITTEE & HOST FEDERATION

Local Organising Committee

Deutscher Turner-Bund Service GmbH

Contact Person: Thorsten Weiß
Otto-Fleck-Schneise 8
60528 Frankfurt am Main
Tel: +49 69 67801 0
Email: championships@dtb.de
Website: www.turnfest.de/en/turn-em



Host Federation

Deutscher Turner-Bund

Otto-Fleck-Schneise 8
60528 Frankfurt am Main
Website: www.dtb.de



3. LOCATION OF THE COMPETITION, TRAINING & WARM-UP HALLS

The Artistic Gymnastics European Championships will take place as part of the German Gymnastics Festival at the exhibition centre in Leipzig. With hundreds of thousands of visitors, participants and volunteers, the International German Gymnastics Festival is the biggest competitive and mass sports event in the world. Having hosted it a remarkable twelve times so far, Leipzig has a very special connection to the International German Gymnastics Festival. The initial instance dates back to 1863 when Leipzig served as the venue for the 3rd German Gymnastics Festival. In 2025, Leipzig will once again be host to athletes and sports enthusiasts from all over the world, thus continuing its long sports history. With a compact and contemporary concept, a wide variety of sporting competitions, spectacular shows, hands-on activities and demonstrations will be on offer at various locations in the city from 28 May to 01 June 2025.

Competition Hall, Warm Up Hall and Training Halls will be located at Hall 1.

NEW: Prior to the QC, there will be one long training session offered for every team / individual gymnast each day.

<p>Competition Hall ARENA</p>	<p>Exhibition Center Leipzig HALLE:EINS Messe-Allee 1, 04356 Leipzig (Germany) Tel: +49 3416780 Spectator capacity: 6.000</p>
<p>Warm-up Hall & Training Halls</p>	<p>Exhibition Center Leipzig HALLE:EINS Messe-Allee 1, 04356 Leipzig (Germany)</p>

Pictures of the Halls

Aerial view of the Exhibition Centre



Competition Hall – Warm Up and Training Hall



4. PROVISIONAL SCHEDULE (subject to changes)

Thursday, May 22nd	
All day	Arrival Day – WAG TC & WAG D Judges optional arrival day of WAG delegations and MAG Superior Jury
Friday, May 23rd	
All day / Evening	Arrival Day – MAG TC (latest arrival 14:00) and MAG D-Judges
All day	Arrival Day of WAG and optional arrival day MAG delegations
16:00 – 21:00	Training on Request - WAG
15:00	WAG D Jury Judges Instruction
17:00 – 19:00	MAG TC Meeting
20:00	WAG Orientation Meeting
Saturday, May 24th	
All day	Arrival Day - MAG Delegations
All Day	Training as per the Schedule – WAG
All Day	Latest arrival day for WAG E-Judges
10:00 – 14:00	MAG D-Jury Judges Instruction
All day	Training on Request – MAG
09:30	WAG Judges Briefing D-Panel (E judges not mandatory)
10:00 – 20:00	WAG Podium Training (Subdivision 1-4) Subdivision 1 Subdivision 2 Subdivision 3 Subdivision 4
20:00	MAG Orientation Meeting
Sunday, May 25th	
All Day	Training as per the Schedule – WAG & MAG
All Day	Latest arrival day for MAG E-Judges
09:30	MAG Judges Briefing – D-Panel (E judges not mandatory)
10:00 – 13:00	WAG E-Jury Judges Instruction & Draw for QC, MTF & AAF
10:00 – 20:00	MAG Podium Training (Subdivision 1-3) Subdivision 1 Subdivision 2 Subdivision 3
Monday, May 26th	
All Day	Training as per the Schedule MAG
08:30	WAG Judges Briefing QC
15:00 – 19:00	MAG E-Jury Judges Instruction & Draw for QC, MTF & AAF
10:00 – 20:00	WAG Qualification (Subdivision 1-4) Subdivision 1 Subdivision 2 Subdivision 3 Subdivision 4 Opening Ceremony Award ceremony Team

Tuesday, May 27th	
All Day	Training as per the Schedule MAG & WAG and Training on Request (WAG)
09:00	MAG Judges Briefing QC
10:00 – 20:00	MAG Qualification (Subdivision 1-3) Subdivision 1 Subdivision 2 Subdivision 3 Award ceremony Team
Wednesday, May 28th	
All Day	Training as per the Schedule & On Request - WAG & MAG
15:30	WAG Judges Briefing MTF
15:30	MAG Judges Briefing MTF
17:00 – 19:00	Mixed Team Final
Thursday, May 29th	
All Day	Training as per the Schedule & On Request – WAG & MAG
12:30	WAG Judges Briefing AAF
14:00 – 16:30	WAG All-Around Final and Award Ceremony
16:45	WAG E-Jury Judges Draw for AF
17:30	MAG Judges Briefing AAF
18:30 – 22:00	MAG All-Around Final and Award Ceremony
Friday, May 30th	
All Day	Training as per the Schedule & On Request
tbc	Podium Training for Day 1 Apparatus Finalists
14:30 – 15:30	MAG Judges Briefing & Draw for AF Day 1
14:30	WAG Judges Briefing AF
16:00 – 19:50	Apparatus Finals Day 1 each apparatus one by one
Saturday, May 31st	
All Day	Training as per the Schedule
tbc	Podium Training for Day 2 Apparatus Finalists
11:30 – 12:30	MAG Judges Briefing & Draw for AF Day 2
11:30	WAG Judges Briefing AF
13:00 – 16:50	Apparatus Finals Day 2 each apparatus one by one
16:50 – 17:00	Closing Ceremony
19:00 – 23:00	Farewell Banquet (Red Bull Arena Leipzig)
Sunday, June 1st	
All day	Departure

5. PARTICIPATION RIGHT AND ACCREDITATIONS

Senior Gymnasts holding a valid FIG licence until the end of the competitions, and with the correct age from European Gymnastics and FIG affiliated Federations in good standings, may take part in these European Championships.

An individual is entitled to only one accreditation card. If an individual has several valid “accreditable” functions, the highest function is normally selected, and the access zones of the functions are cumulated.

No substitutes may directly benefit from unused accreditations. The functions of a judge and gymnast cannot be combined with any other function.

All accreditations include the Turnfest Day Ticket with an access to all halls of the Leipzig Trade Fair

<https://www.turnfest.de/en/unsere-programm>

Maximum Delegation Size

Maximum size of each delegation, as per European Gymnastics Accreditation Rules.

Function	MAG	WAG	Mixed
Gymnasts	6	5	11
Head of Delegation	1	1	1
Team Manager	1	1	2
Coaches	3	3	6
Doctors	1	1	1
Physiotherapist	1	1	2
Judges (for delegations with 1-2 gymnasts)	1	1	2
Judges (for delegations with 3-6 MAG & 3-5 WAG gymnasts)	2	2	4

Additional Coach (number of coaches may not exceed number of gymnasts)	EUR 180.00
Additional Physiotherapists	EUR 180.00
Guests	EUR 180.00
VIP Guests and Federation Presidents	EUR 250.00

The cost for additional accreditations must be paid directly to the LOC. An additional invoice will be sent to the concerned NF, including the bank details of the LOC.

Accreditation Application Process

Each NF will be invited to log into the LOC Online System where a section will be available to enter accreditation details of each delegation member. All the details on how to access the portal and description of the application process will be provided to each NF by the LOC prior to the application process.

This will involve entering personal information (name, date of birth etc.), assigning the correct function (e.g. Athlete, Coach, Doctor) and uploading a photograph which meets the requirements below.

Requirements of the photograph uploaded to the online accreditation system:

- It must be in **colour**, should be a recent and an accurate likeness of the applicant and must not have been altered in any way
- It should be a **front view of the applicant's face, head and shoulders (facing forward and looking straight at the camera)**; hats, hair bands or dark glasses must not be worn.
- It should show the full head, without any head covering, unless worn for religious beliefs or medical reasons
- With a neutral expression and with the mouth closed
- With eyes open and clearly visible (no sunglasses or tinted glasses and no hair across the eyes)
- No objects, other people or shadows in the photo

- The **background must be plain and light colour, preferably white** but light blue and light grey will be accepted (NO black, dark blue, red etc.)
- Be clear and in sharp focus
- Be taken within the last 6 months

Photograph technical requirements

The photograph must adhere to the following requirements:

- JPG format ONLY
- Be vertical orientation
- Have adequate space between face/shoulders and the edges of the photograph
- Should have a minimum size of 100KB and maximum of 2MB
- The face should be at least 300 pixels wide

Details should be entered for all participants **no later than 28 April 2025**. This includes applications for accreditation of additional coaches, paramedical staff and guests for whom the NF will assume the participation costs, as described above.

Accreditation applications without a photo will not be accepted and accreditation cards will not be pre-printed.

Please consider: If photos will have to be taken at the accreditation desk (because they were not sent within the deadline/in the correct format) **EUR 50.00** will be charged for each photo.

All data submitted by NFs via the LOC Online System is subject to the approval of European Gymnastics. The European Gymnastics Accreditation Rules will be strictly applied, notably as far as the number of accreditations per federation is concerned. No further accreditations may be issued. Any additional person is considered a spectator and must buy entry tickets.

Accreditation cards will not be delivered unless all financial and insurance obligations have been successfully completed.

In addition, each NF **must also** register on the **European Gymnastics GymData Online registration system** by the stated entry deadlines for Definitive & Nominative entry (see Point 7).

Media Accreditations

International and local media representatives as well as federations' communication staff who are interested in covering the event can register online <https://registry.gymdata.online/>.

Deadline: **12 May 2025**.

The European Gymnastics Accreditation Rules and Media Rules must be strictly respected.

6. AGE LIMITS OF GYMNASTS

WAG Seniors: min. 16 years old (born 2009) or older

MAG Seniors: min. 18 years old (born 2007) or older

- NF must declare through the gymnast's FIG profile whether their MAG 18-year-old gymnasts will compete as junior or senior prior to their first competition in 2025.

Gymnasts who have participated in a Senior World Championships, a Senior Continental Championships, a World Cup / World Challenge Cup, and Multi-Sport Games, may not participate afterwards in Junior competitions.

All gymnasts must have a valid FIG licence until the end of the event.

7. REGISTRATIONS AND ENTRY FEES

Registrations can only be made by European Gymnastics and FIG affiliated federations in good standing, via the **GymData** Online registration tool from Smart Scoring (<http://registry.gymdata.online/>) and by using the National Gymnastics Federations' login and password.

Definitive Registration

The definitive registrations must be completed by entering the composition of the delegation until **26 February 2025 (23:59 Swiss time)** at the very latest.

Nominative Registration

The nominative registrations must be completed by entering the composition of the delegation until **28 April 2025 (23:59 Swiss time)** at the very latest.

Reminder: Together with the nominative registration, delegations must complete their accreditation application via the LOC online system.

No late registration will be accepted after the drawing of lots (i.e. the gymnasts will not be allowed to compete), however, a NF who has registered a Team is authorized to add gymnasts to the number declared at the Definitive Registration, up to the maximum quota allowed.

Entry Fees

The Entry Fee for this event will be EUR 150.00 per gymnast.

To be transferred to **European Gymnastics Account** by **28 April 2025**:

Beneficiary	European Gymnastics
Account	L 5205.70.49 European Gymnastics
Bank	Banque Cantonale Vaudoise Place St-Francois 14, CP 300 1002 LAUSANNE, Switzerland
IBAN	CH05 0076 7000 L520 5704 9
SWIFT/BIC	BCVLCH2LXXX

All bank fees in connection with the bank transfer must be covered by the NF. Please state the name of the Federation and the payment purpose on the transfer (i.e. 'GER_2025 ART ECH Registration Fees').

The payment must be made in EUR only.

Federations which have not fulfilled their financial obligations towards European Gymnastics or FIG (e.g. annual membership fees, unpaid invoices etc.) and the LOC (e.g. accommodation, meals) will not be allowed to participate in these European Championships.

In case of non-participation or partial participation the fee will not be reimbursed.

Sanctions

The sanctions are as follows as per European Gymnastics /TR (Article 3.2.5).

Definitive entry received after the deadline	EUR 1500.00
Nominative entry received after the deadline <i>Note: No late registration can be accepted after the drawing of lots*</i>	EUR 1000.00
Non-participation of a team, but participation of individuals (information given at the competition venue)	EUR 1000.00
Non-participation of individuals, no participation at all (noticed at venue)	EUR 1000.00

* Except for a team increasing its number up to the maximum quota.

8. LICENCES

No gymnasts will be accredited without a FIG licence valid until the end of the competitions.

Licence application forms (new or renewal) must be submitted **at least one (1) month prior to the deadline for nominative registration.**

Please consult the FIG licence rules for additional information in this respect.

9. JUDGING

Each participating National Federation has the obligation to nominate judges in accordance with the number of gymnasts (see section 5).

If a federation does not enter a judge or comes with an insufficient number of judges, European Gymnastics, in line with the Technical Regulations, will request payment in the sum of EUR 2000.00 per missing judge.

N.B: In this first year of the new FIG cycle, the nominative registration of judges will have to be submitted at the deadline for nominative registrations only. The Gyndata registration platform will be adapted accordingly.

All judges must have a current valid FIG brevet and category, for their function according to FIG Judges rules at the time of the event.

Whilst the presence of E-judges at the Official Podium Training is not mandatory, the MTC & WTC would strongly encourage all E-Judges to be present at Podium Training.

10. DRAWING OF LOTS

The gymnasts' drawing of lots will take place after the deadline of the Nominative Registration, **on 30 April 2025 at the Head Office of European Gymnastics.**

The number of subdivisions depends on the number of participating gymnasts. The composition of subdivisions is decided by the drawing of lots among the teams and individual gymnasts.

The draw will start with the 6 (MAG) or 4 (WAG) highest ranked teams from the qualification competition at the European Championship from the previous year (or in exceptional circumstances from another competition to be decided by the EC following proposals from the MAG and WAG Technical Committees) plus the host NF, drawn in the final subdivision and placed horizontally across the apparatus working in Olympic order.

The draw will continue with the remaining teams and individual gymnasts to complete the final Subdivision and then work its way back to Subdivision 1. As federations are drawn, they will be placed horizontally across the apparatus working in Olympic order. The draw will continue until all federations have been drawn.

11. COMPETITION FORMAT

Qualifying Competition incl. Team Final, plus qualification for Mixed Team Final, All-Around Final and Apparatus Finals.

For MAG and WAG a Senior Team consists of 3 - 5 gymnasts, of which up to 4 compete on each apparatus. The 3 best scores on each apparatus are added together to make the total score for the Team on that apparatus.

MAG Federations who compete with a Senior Team may bring a 6th gymnast to participate as an individual apparatus specialist. This gymnast may compete on a maximum of 3 apparatus.

The competition consists of 6 apparatus for the men and 4 for the women.
As a general rule, the events will be performed in the Olympic order.

The best Team from the Qualifying Competition is awarded the title "European Artistic Gymnastics Team Champion Men / Women".

Mixed Team Final

Qualification for the MTF will come from the MAG and WAG Qualification Competition.

A Mixed Team will comprise of one (1) Male & one (1) Female Gymnast from each Federation.

The Best 16 Mixed Teams will qualify for the Mixed Team Final.

- MAG will compete on Floor, Parallel Bars & Horizontal Bar
- WAG will compete on Vault, Balance Beam & Floor

The MAG gymnast with the highest total score across Floor, P-Bars & H-Bar **PLUS** the WAG gymnast with the highest total score across Vault, Beam & Floor from a Federation will form the Mixed Team for their Federation.

Qualification is by NAME and not by Federation (Gymnasts cannot be substituted unless they are injured).

The winner of the Mixed Team Final is awarded with the title "European Artistic Gymnastics Mixed Team Champions".

MAG & WAG – All Around Final

The 24 gymnasts with the highest ranking obtained in the Qualifying Competition will qualify for the All-Around Final. A maximum of two gymnasts per federation are allowed in the finals. The starting order of the gymnasts will be communicated in the Work Plan.

The winner of the All-Around Final is awarded with the title "European Artistic Gymnastics All-Around Champion Men/Women".

MAG & WAG – Apparatus Finals

The 8 highest ranked gymnasts on each apparatus in the Qualifying Competition will qualify for the respective Apparatus Final. A maximum of two gymnasts per federation per apparatus is allowed in the finals. The starting order of the gymnasts will be communicated in the Work Plan.

The winner on each apparatus is awarded with the title "European Champion on ... (the corresponding apparatus) Men/Women".

Reserve gymnasts for all Finals of these European Championships will be in accordance with the FIG Technical Regulations.

The provisional training, warm-up and competition schedules will be included in the Work Plan.

12. EQUIPMENT

The Manufacturer Supplier will be Spieth Gymnastics.

Please refer to Appendix A for the complete List of Apparatus which will be used.

13. PUBLICITY

FIG advertising and publicity rules must be respected.

As the Code of Points outlines deductions should the FIG rules for Advertising and Publicity on attire and equipment not be respected, each Federation may fill in the online FIG Publicity form (FIG Rules for Advertising and Publicity Appendix E and F) if deemed necessary and send it to European Gymnastics **by 28 April 2025**, at the very latest in order to have it approved.

While the Publicity Rule Chart is available on the FIG website under "Rules – Publicity" for additional information, you may also contact ldavila@europeangymnastics.com for further assistance if required.

14. VISA

Please verify immediately with your travel agent or the Embassy or Consulate of **Germany** in your country if a visa is required for your travel to **Germany**. The Organising Committee will be happy to assist each Delegation member with an official invitation letter, provided that the request is made by **26 February 2025** via the LOC Online System. The official visa invitation letter will be sent by e-mail.

It is not guaranteed by the LOC that the requests made after this deadline will be fulfilled. More information about visas can be obtained on the following link: <https://www.auswaertiges-amt.de/en>

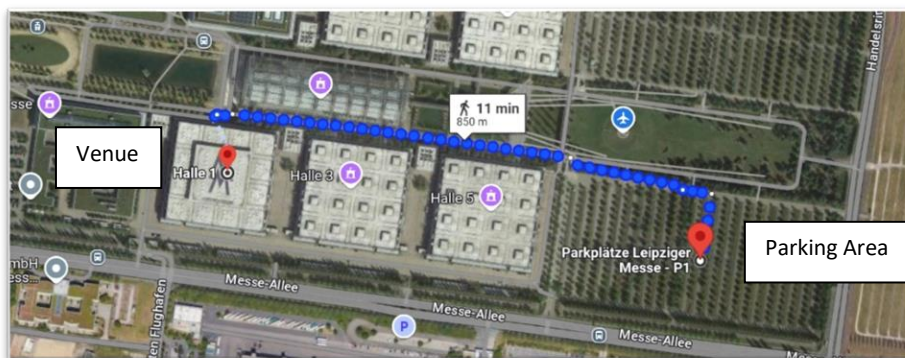
15. TRANSPORTATION

International Transportation

The invited participating Federations must pay for the travel costs of their delegation members.

European Gymnastics and the LOC strongly recommend that each Federation take a cancellation insurance for their travel.

Parking information at the venue for delegation planning to arrive by car/Mini Bus:



Local Transportation

The LOC offers free local transportation on official arrival days (22-24 May) and departure days (31 May and 01 June) to the official hotels and back for all accredited persons from/to:

- The official airport: Leipzig/Halle Airport (LEJ) (20 km from official hotels, approx. 30 min. by bus)
- The official railway station: Leipzig Hauptbahnhof (main railway station). Leipzig main railway station is in walking distance to Cat. I and II hotels.

Transportation from and to the airports on other days than the official arrival and departure days will be subject to a transportation fee of EUR 50.00 per person (one-way).

Event local transportation service from the official hotels to the venue and back, as well as to any other official activities and back, will be provided to all delegations that stay at one of the official hotels and submit their Travel Schedule for Arrival and Departure to the LOC by **28 April 2025** via the LOC Online System.

16. ACCOMMODATION

The LOC is delighted to provide the following selection of official hotels and meals arrangements. All rates include breakfast, farewell banquet applicable taxes, service charges, and airport and local transportation.

IMPORTANT NOTE: the below-mentioned hotel prices are valid before the accommodation by number deadline of **26 February 2025**. The hotel prices will **increase automatically by EUR 5.00 per person per night at all the official hotels after this accommodation deadline.**

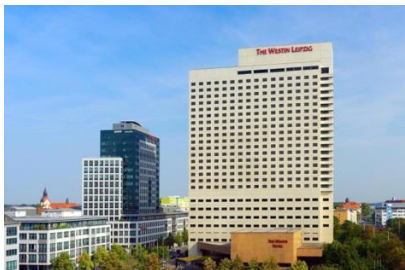
Official Hotels

European Gymnastics Official Hotel and Official Judges' Hotel / Prices

The Westin Leipzig (CATEGORY I) (click [here](#) for more Information)

📍 Gerberstraße 15, 04105 Leipzig

☎ (+49) 341 9880



Prices per person / per night (all taxes included):

Single Room including breakfast: EUR 250.00

Single Room including half board: EUR 298.00

Single Room including full board: EUR 350.00

Twin Room including breakfast: EUR 167.00

Twin Room including half board: EUR 215.00

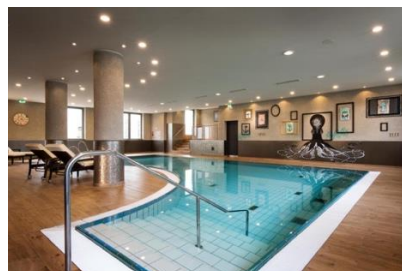
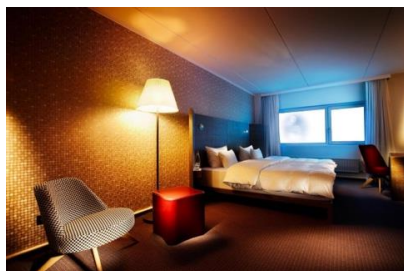
Twin Room including full board: EUR 267.00

Official Hotel for Delegations / Category and Prices

Pentahotel (CATEGORY II) (click [here](#) for more Information)

📍 Großer Brockhaus 3, 04103 Leipzig

☎ (+49) 341 12920



Prices per person / per night (all taxes included):

Single Room including breakfast: EUR 219.00

Single Room including half board: EUR 257.00

Single Room including full board: EUR 268.00

Twin Room including breakfast: EUR 147.00

Twin Room including half board: EUR 186.00

Twin Room including full board: EUR 224.00

Dorint Hotel (CATEGORY II) (click [here](#) for more Information)

📍 Stephanstraße 6, 04103 Leipzig

☎ (+49) 341 97790



Prices per person / per night (all taxes included):

Single Room including breakfast: EUR 219.00

Single Room including half board: EUR 257.00

Single Room including full board: EUR 268.00

Twin Room including breakfast: EUR 147.00

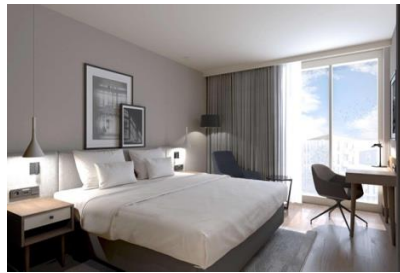
Twin Room including half board: EUR 186.00

Twin Room including full board: EUR 224.00

Radisson Hotel (CATEGORY II) (click [here](#) for more Information)

📍 Berliner Str. 24, 04105 Leipzig

☎ (+49) 171 6891728



Prices per person / per night (all taxes included):

Single Room including breakfast: EUR 219.00

Single Room including half board: EUR 257.00

Single Room including full board: EUR 268.00

Twin Room including breakfast: EUR 147.00

Twin Room including half board: EUR 186.00

Twin Room including full board: EUR 224.00

Globana Airport Hotel (CATEGORY III) (click [here](#) for more Information)

📍 Frankfurter Str. 4, 04435 Schkeuditz

☎ (+49) 34204 33333



Prices per person / per night (all taxes included):

Single Room including breakfast: EUR 141.00

Single Room including half board: EUR 167.00

Single Room including full board: EUR 193.00

Twin Room including breakfast: EUR 114.00

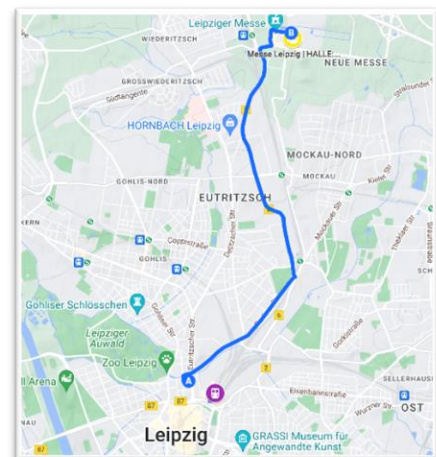
Twin Room including half board: EUR 150.00

Twin Room including full board: EUR 178.00

Hotel	Distance Hotel-Airport	Distance Hotel-Main Railway station	Distance Hotel-Venue	Gym	Wellness
Cat I Westin Leipzig	20 km 30 min by bus	700 m	7,3 km 25 min by bus	✓	✓
Cat II Dorint	21,9 km 30 min by bus	1,6 km	8,7 km 25 min by bus	Bookable Gym close to the hotel	✗
Cat II Pentahotel	20,9 km 30 min by bus	900 m	7,7 km 25 min by bus	✓	✓
Cat II Radisson	19,0 km 30 min by bus	750 m	6,4 km 20 min by bus	✓	✗
Cat III Globana	6,3 km 15 min by bus	26 km 35 min by bus	19,3 km 20 min by bus	✓	✓

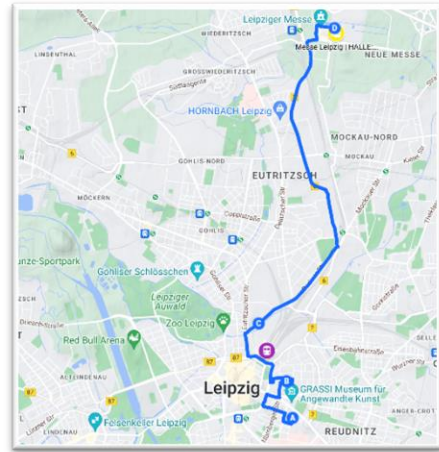
Map Hotel Cat I (EG and Judges):

- ✓ EG and Judges I Shuttle Westin Leipzig
- 📍 A The Westin Leipzig, Gerberstraße, Leipzig
- 📍 B Messe Leipzig I Halle:Eins



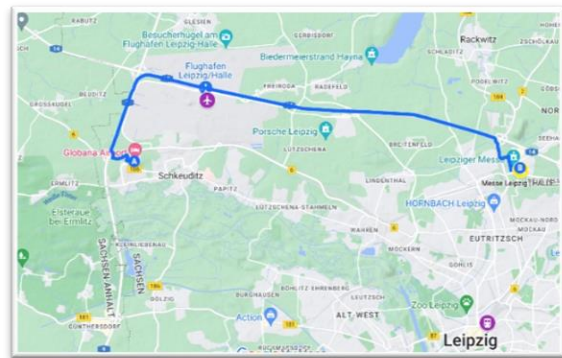
Map Hotel Cat II:

- DEL | Shuttle City-Hub
- A DEL | Dorint Hotel Leipzig
- B DEL | pentahotel Leipzig
- C DEL | Radisson Hotel Leipzig
- D Messe Leipzig | HALLE:EINS



Map Hotel Cat III:

- DEL | Shuttle Globana
- A DEL | Globana Airport Hotel
- B Messe Leipzig | HALLE:EINS



Accommodation Booking

The following steps must be followed to book the official hotels:

The participating federations must pay for the accommodation expenses of their delegation members. The LOC will provide each Federation with a personal login by email. The hotel rooms will be allocated on a “first come, first serve” basis.

The following steps must be respected:

- 1) Accommodation and meals options **by number**:
submit the reservation request via the **LOC online system by 26 February 2025** at the very latest.
- 2) Accommodation and meals options **by name**:
submit the reservation request via the **LOC online system by 28 April 2025** at the very latest.

The option will be displayed as follows in the LOC online system:

European Gymnastics & Judges Hotel (Category I)	Delegation Hotels (Category II)	Delegation Hotel (Category III)
Category I single room – B&B	Category II single room – B&B	Category III single room – B&B
Category I single room – Half board	Category II single room – Half board	Category III single room – Half board
Category I single room – Full board	Category II single room – Full board	Category III single room – Full board
Category I twin room – B&B	Category II twin room – B&B	Category III twin room – B&B
Category I twin room – Half board	Category II twin room – Half board	Category III twin room – Half board
Category I twin room – Full board	Category II twin room – Full board	Category III twin room – Full board

Accommodation and Meals Payment

Payment for accommodation and meal options must be made through bank transfer to:

Beneficiary: **Deutscher Turner-Bund Service GmbH**
IBAN: DE31 5019 0000 6200 0112 34
BIC: FFVBDEFF
Bank: Frankfurter Volksbank eG
Bank Address: Boersenstraße 7 – 11, 60313 Frankfurt am Main, Germany

The payment deadlines can be found under Art. 24.

Each participating member Federation is kindly requested to integrate the payment's purpose as follows:
ECh2025_ART_IOC country code.

All bank fees in connection with the bank transfer must be covered by the NF. Please state the name of your Federation and the payment purpose on the transfer. The payment must be made in EUR only.

Cancellation Policy

European Gymnastics and the LOC **strongly recommend** that each Federation take a **cancellation insurance** for their **accommodation and meal options**.

Cancellation period – accommodation and meals	Penalty fee
Until 26 February 2025	No charge
27 February-28 March 2025	50 % of the total accommodation and meal costs will be charged
29 March-28 April 2025	75 % of the total accommodation and meal costs will be charged
After 28 April 2025	100 % of the total accommodation and meal costs will be charges

17. MEALS

Meal options must be booked for the entire duration of the stay, as Member Federations cannot pre-book individual days.

For the delegations:

All delegation hotels will serve breakfast, lunch and dinner (if booked by the federations).

For the judges:

Lunch will be served for **all judges** at the venue (on the respective podium training days and competition days) except on 28 and 30 May.

Dinner and lunch on non-competition days will be served at the hotel **if booked by the federations**.

Judges Meals per Day:

Date	Competition	Discipline	Lunch	Dinner
22 May	Arrival	WAG and MAG Judges		Hotel
23 May	Arrival	WAG and MAG Judges	Hotel	Hotel
24 May	WAG Podium	WAG Judges	Venue	Hotel
		MAG Judges	Hotel	Hotel
25 May	MAG Podium	WAG Judges	Hotel	Hotel
		MAG Judges	Venue	Hotel
26 May	WAG Qualification	WAG Judges	Venue	Hotel
		MAG Judges	Hotel	Hotel
27 May	MAG Qualification	WAG Judges	Hotel	Hotel
		MAG Judges	Venue	Hotel
28 May	Mixed Team Final	WAG and MAG Judges	Hotel	Hotel
29 May	All Around Finals	WAG Judges	Venue	Hotel
		MAG Judges	Hotel	Hotel
30 May	Apparatus Finals I	WAG and MAG Judges	Hotel	Hotel
31 May	Apparatus Finals II	WAG and MAG Judges	Venue	Banquet

Farewell Banquet

The Farewell Banquet for the delegations will take place on Saturday, **31 May 2025** after the last competitions at the Red Bull Arena. In this arena one of the highlights of the German Gymnastics Festival will take place: The Stadium Gala.



Accredited Delegation members (with the exception of E- and R- media), who will stay at one of the official hotels and will book their accommodation through the LOC will receive a free ticket for the Stadium Gala.

We would like to inform you that it is planned that all European champions will have an active part in the stadium gala. More details will follow in the work plan.

All other persons wishing to attend the Banquet will be entitled to do so, provided that a request is sent to the LOC by email by **28 April 2025**, requesting the number of tickets required. The cost of a ticket for the Farewell Banquet is EUR 85.00.

18. INSURANCE

The Host Federation, the Organizing Committee, European Gymnastics and the FIG will not be held responsible for any liabilities in case of accidents, illness (including COVID-19), repatriation and the like. The European Gymnastics and FIG Technical Regulations foresee that all participating Federations are responsible for making their own arrangements to have the necessary valid insurance coverage against illness, accidents and for repatriation for all the members of their Delegation.

The FIG insurance IMSSA (International Medical & Security Sports Assistance) **for gymnasts and judges** with a valid FIG License / Brevet is valid for these European Championships.

Basic insurance (sickness, accident and repatriation) in your country of residence is compulsory in order to be able to benefit from coverage by FIG IMSSA subsidiary insurance. Please also refer to <https://www.gymnastics.sport/site/pages/medical-insurance.php> for additional information regarding the FIG IMSSA insurance for Athletes and Judges.

All other delegation members are NOT included in this insurance and must present a proof of insurance at the accreditation.

Delegations can upload their proof of insurance until 28 April 2025. If no proof of insurance is uploaded, the LOC will verify the insurance upon arrival of the delegation members (e.g. cover note or photocopy of the valid policy in English writing).

The responsibility for eventual quarantine and/or positive Covid19 cases remains with the National Federation concerned. This includes the covering of all costs.

Delegation members with insufficient insurance coverage must inform the LOC via the **LOC** online system no later than **28 April 2025**. The LOC will subsequently offer insurance at the Federations own charge as follows: EUR 15.00 per person/day.

19. SAFEGUARDING

From the official event day of arrival until the official day of departure, participants (gymnasts, coaches, judges and any other delegation members) have the possibility to contact by phone or e-mail the LOC Safeguarding Officer in case of harassment and abuse of any type or if they are worried and do not feel comfortable.

The information regarding the LOC Safeguarding Officer will be communicated upon arrival of the delegations on site.

In addition, posters of the "10 Golden Rules of Gymnastics", the FIG campaign to raise awareness about youth protection in Gymnastics, will be displayed in several locations, including training and warm-up halls and public zones.

20. WORK PLAN

European Gymnastics will endeavour to issue the work plan to Federations and other persons concerned six weeks prior to the start of the competition.

21. DOPING CONTROLS

Under the supervision of the International Testing Agency, anti-doping controls will be organized according to the valid WADA Code, International Standards and FIG Anti-Doping Rules. The anti-doping controls may take place at any time.

22. OFFICIAL HOSPITAL

Name: **St. Elisabeth-Krankenhaus Leipzig gGmbH**

Address: Biedermannstraße 84

Tel: 04277 Leipzig

The name of the Medical Doctor will be communicated in the Work Plan.

23. WAG MUSIC

The music files will have to be uploaded via the LOC Online System but no later than **28 April 2025**. Acceptable formats are **mp3 only**.

The music file should be named as follows:

- The name of the nation (official abbreviation of the country)
- The first and last name of the competitor

By uploading the music file the national federation confirms that

- the music used does not violate any copyrights and that it can be broadcasted within sports. Any claims due to violations of copyrights must be borne by the national federation.

At the same time, we are strongly requesting the WAG participants to also bring a USB key containing the athletes' floor music for all training sessions and in case of a technical problems.

24. TICKETS

New tickets will be released on 06 January 2025.

More information:

<https://www.turnfest.de/en/turn-em>

<https://turnfest2025-tickets.reservix.de/>

25. SUMMARY OF DEADLINES AND PAYMENTS

For European Gymnastics

Items	Opening Date	Closing Date
Definitive Registration	10 December 2024	26 February 2025
Nominative Registration	27 February 2025	28 April 2025

Payment to European Gymnastics	
Items	Closing Date
Registration Fee	28 April 2025

For the LOC

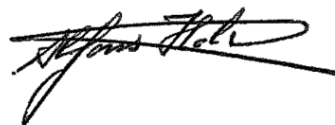
LOC Online System		
Items	Opening Date	Closing Date
Accommodation and meals options by Numbers	01 December 2024	26 February 2025
Visa Request	01 December 2024	26 February 2025
Accommodation and meals options by Name	01 December 2024	28 April 2025
Travel Schedules	01 December 2024	28 April 2025
Upload Proof of insurance	01 December 2024	28 April 2025
Insufficient Insurance Cover	01 December 2024	28 April 2025
Accreditation (online application)	01 December 2024	28 April 2025
Modification of the delegation after the nominative deadline	The LOC Online System will be reopened for 24h upon request and after approval of European Gymnastics	

Payment to the LOC	
Items	Closing Date
50 % of the total accommodation and meal costs	26 February 2025
Remaining 50 % of the total accommodation and meal costs	28 April 2025

We look forward to seeing you in Leipzig.

Yours Sincerely,

Leipzig, 22/11/2024



Dr. Alfons Hölzl
The President of the German Gymnastics Federation

APPENDICES

- Appendix 1 – List of Apparatus
- Appendix 2 – Venue Layout